

Product Description

BFS range of barrier pressure units are designed to perform various functions of a barrier system which is essential for operating double seals (circulation and cooling of the barrier medium, pressurisation of the barrier fluid and compensation of leakage). The BFS systems are designed to operate with hydraulic oil having viscosity values ranging from 12 to 90 mm²/s under normal operating temperature of the equipment. The final selection of optimum viscosity of the oil to be used has to be ascertained independently in accordance with the respective operating parameters of the equipment.

Technical Features

1. For reducing barrier fluid pressure at standstill an automatic relief valve is provided
2. Reversible double filter is provided for the fluid to pass through the oil cooler
3. Level Switch with contact for minimum level
4. Barrier fluid pressure can be controlled manually
5. Maximum operating temperature in the tank to be maintained at 80 °C (return line maximum 90°C)
6. For monitoring the pump discharge pressure (outside the circuit) an additional pressure connection is provided
7. Temperature monitoring is achieved by providing a return line and tank thermometer

Typical Industrial Applications

- Chemical industry
- Oil and gas industry
- Petrochemical industry
- Refining technology

Functional Description

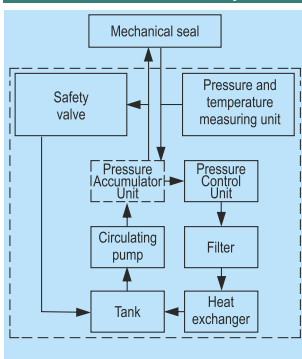
The barrier pressure for circulation is generated by a gear pump. The setpoint barrier pressure is set on an overflow valve in the mechanical seal return line. From this point on the barrier fluid flows back without pressure through a filter and a heat exchanger to the storage tank. To enable systems (pump, agitator) to be stopped without causing damage to the seal in the event of a malfunction (e.g. power failure, damaged motor, etc.), the barrier pressure unit can be fitted with a pressure accumulator unit. To prevent the pressure in the accumulator discharging to the pressureless storage tank, the return line has a pilot-operated check valve, and the supply line also has a simple check valve. The barrier pressure is retained for a limited time. However, no circulation takes place and no heat is dissipated from the mechanical seal.

Technical Features

Designation	Nominal pressure max. Barrier pressure	Flow rate (l/min)	Cooling capacity (kW) with hydraulic oil $\Delta t = 10K$	Tank		Dimensions overall (mm)			Net weight approx.	Motor data
				Nominal capacity (litres)	Circulation volume (litres)	Height	Width	Depth		
BFS 54	40 bar (580 PSI)	6	1.8	40	12	650	610	380	125	1

Higher values on request
Other materials on request

Installation, Details, Options



Installation and operating diagram for a BFS system.

The specifications, drawings, images etc included in this catalogue are intended to be generic and must be interpreted as equivalent or functionally equivalent, more specifically the performance capabilities mentioned in this catalogue is based on optimum values, however the performance of the product is dependent on size, material of construction, media, pressure, temperature, sliding velocity etc and it shall vary from size to size or application to application. Customers are requested to consult with Sealmatic before employing the product from this catalogue for any application.